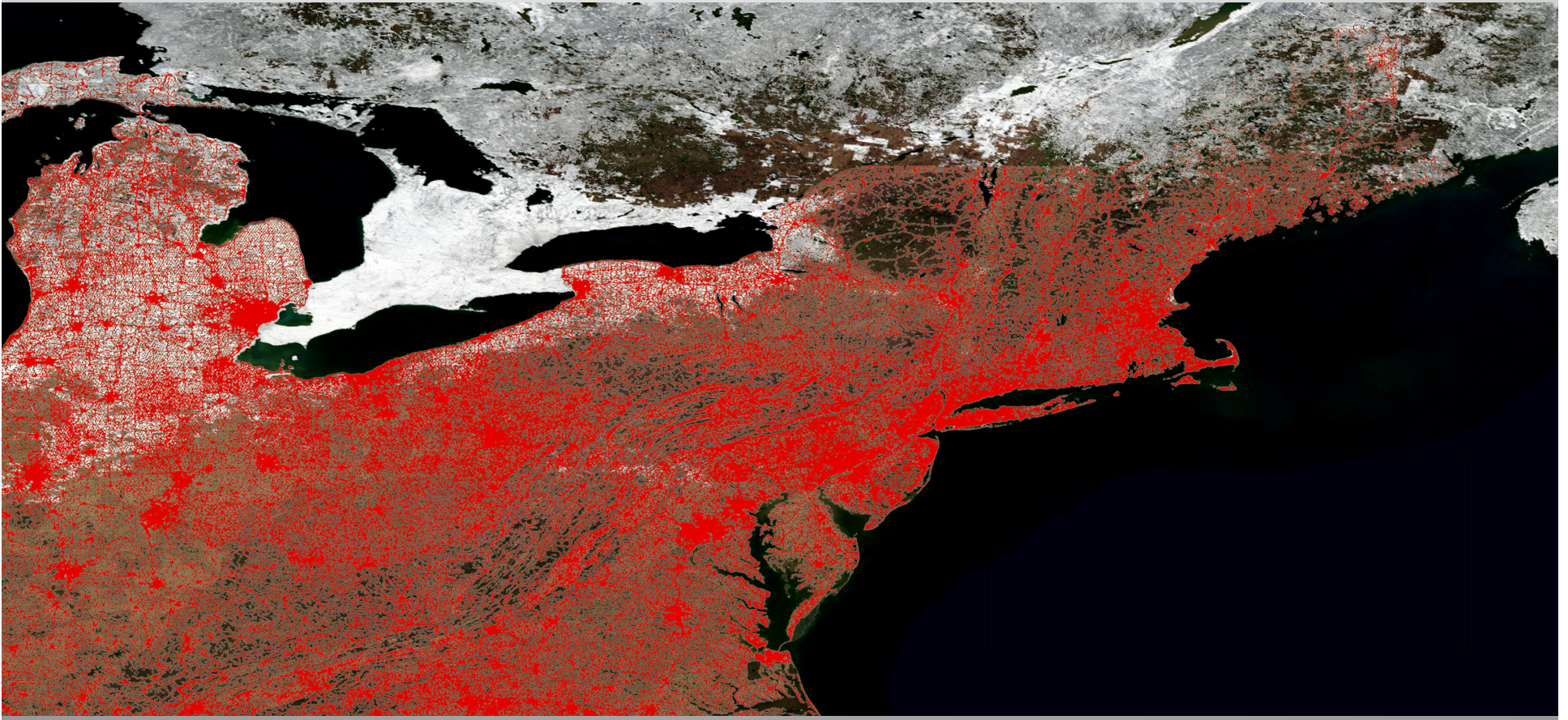
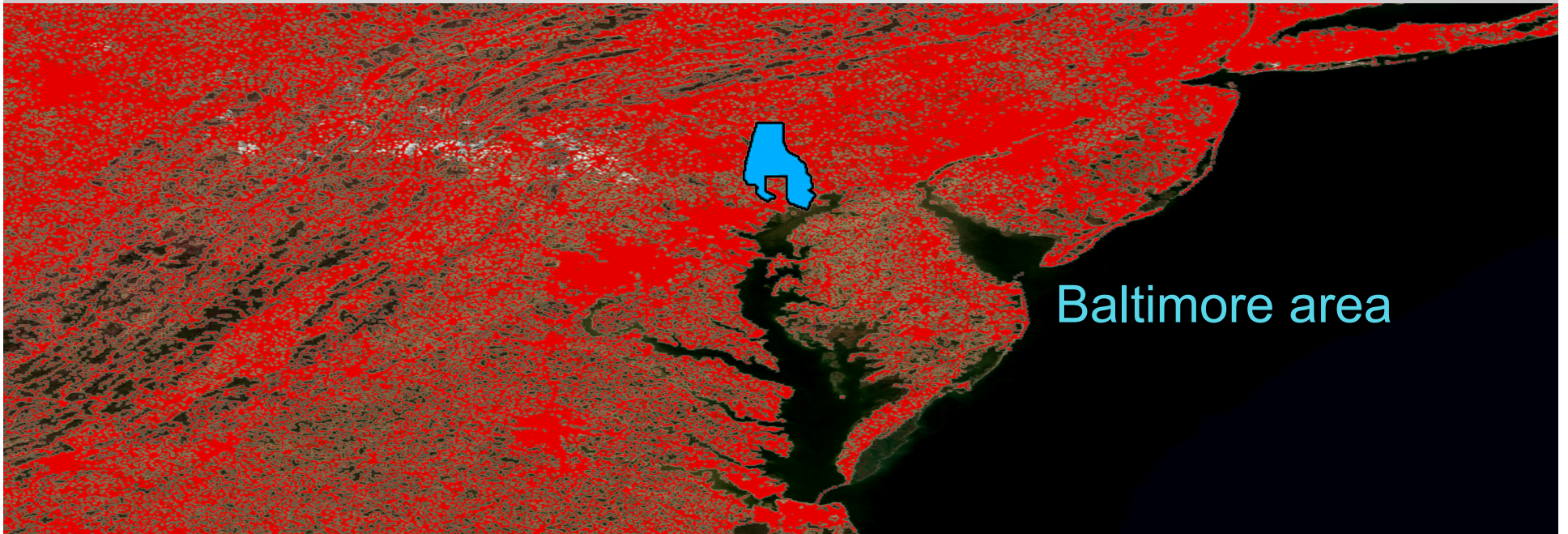


Northeastern United States



Baltimore Area



Baltimore area

Baltimore is a city of over 600,000 people with the entire metropolitan area containing 2.7 million people



Baltimore has four distinct seasons, and during winter months receives on average more than 18 inches of snow each year. Baltimore also gets

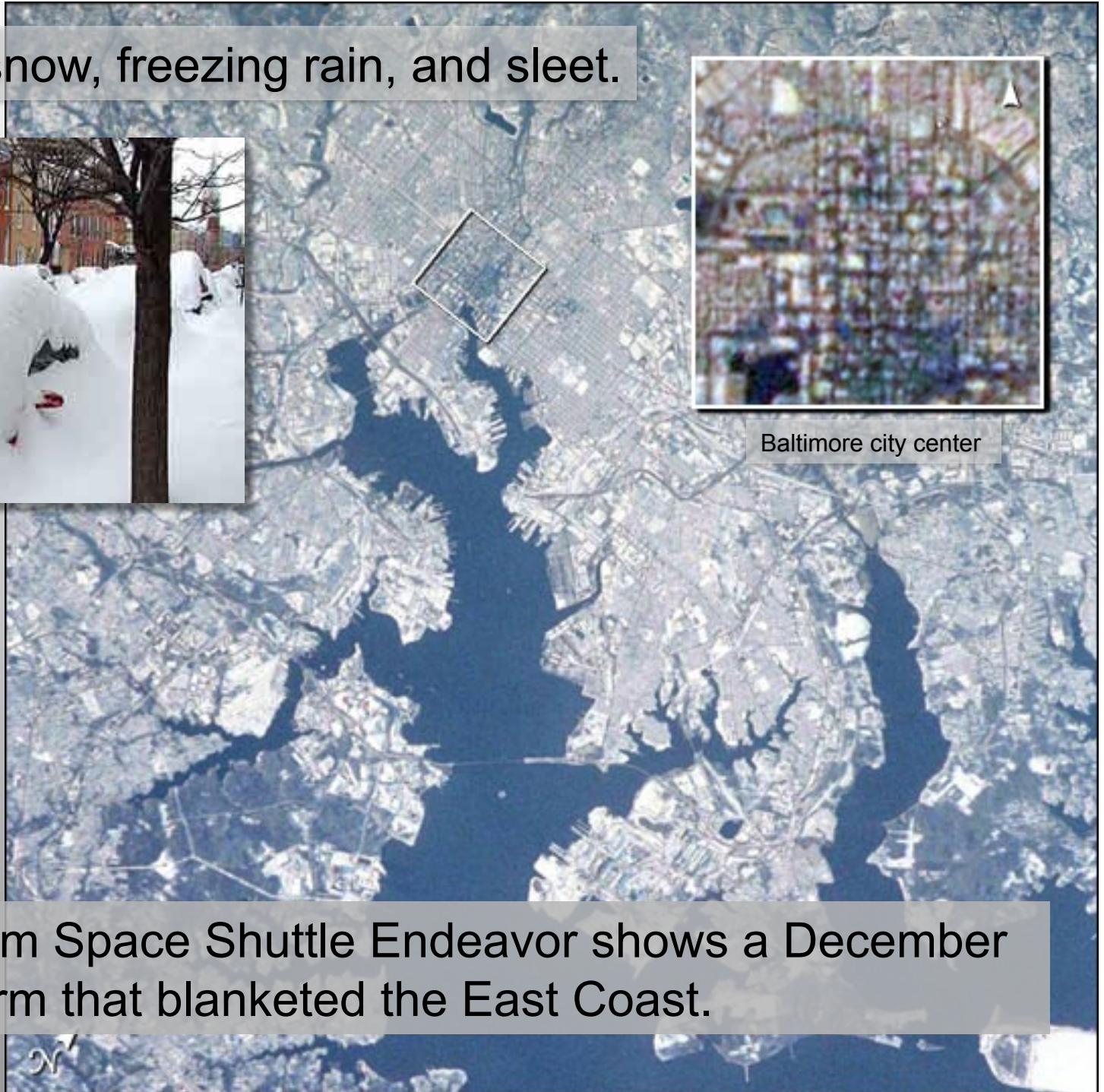


freezing rain or sleet a few times a year.



But in the winter of 2009-2010, 80.4 inches of snow fell on Baltimore!

Winter brings snow, freezing rain, and sleet.



Baltimore city center

This image from Space Shuttle Endeavor shows a December 2002 snowstorm that blanketed the East Coast.

Baltimore uses road salt along with snow plows and sand to combat winter storms.



Image Credits

1. AMNH
2. AMNH
3. Nfutvol/Wikipedia
4. Charles Village Guilford: Jfruh/Wikipedia
Baltimore Tree-Lined Street: Gerald Neily
Mt. Vernon Baltimore: Kafuffle/Wikipedia
Baltimore Winter: Johns Hopkins University
5. Snow Buries Cars Baltimore: Bill Swartwout/www.SouthBaltimore.com
Space Shuttle Image: STS113-347-28 Baltimore, Maryland, USA December 2002
6. Snow Plow: Acorn Tree & Crane, Inc.